

VIBROTEST

VTS^{Series}

The electromechanical vibration system for testing with high displacement

The series VTS has been developed for 'loose-cargo' transportation simulation for a wide range of dimensions and loads.



VIBROTEST

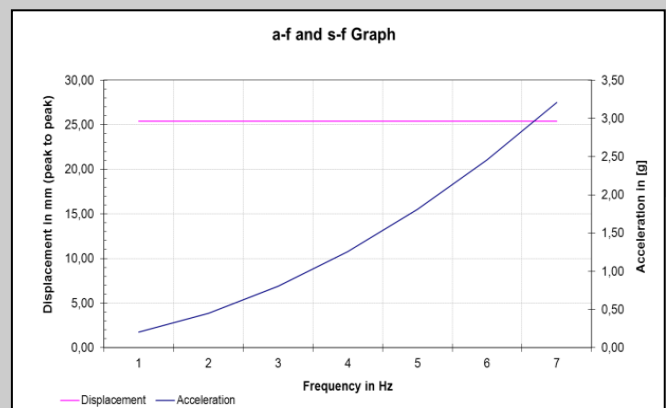
Technical description:

The VIBROTEST system VTS is available in different sizes and for different oscillation modes. Just for vertical (V) or circular (C) oscillation or as one system for both oscillating modes.

The changing between the modes takes only a few minutes. The oscillation frequency can be adjusted infinitely variable on the switch cabinet. The displacement is fixed. Timer and stroke counter function for repeatable test conditions. Furthermore the actual acceleration and frequency are being displayed. Logging of test progress possible on request.

Oscillation graph:

Since the displacement is the same for the vertical and circular mode the graph is valid for movement in z-direction and x-direction.



Model Description		VTS50	VTS150	VTS500	VTS1500	VTS2500
		Type	V, C or V-C	V, C or V-C	V, C or V-C	V, C or V-C
Displacement (p-p, fix)*:	mm	25.4 ± 0.5	25.4 ± 0.5	25.4 ± 0.5	25.4 ± 0.5	25.4 ± 0.5
Frequency range	Hz (min ⁻¹)	2 – 8 (120 - 480)	2 – 8 (120 - 480)	2 – 8 (120 - 480)	2 – 5 (120 - 300)	2 – 5 (120 - 300)
Max. payload:	kg	50	150	500	1500	2500
Working plate:	m	1,0 x 0,8	1,0 x 0,8	1,3 x 0,9	1,5 x 1,5	2,5 x 1,5
Table surface:		hard wood plate	hard wood plate	bolted steel wear plate	bolted steel wear plate	bolted steel wear plate
Weight:	kg	ca. 150	ca. 250	ca. 700	ca. 2.200	ca. 4.000
Power consumption	kW	3	5	12	20	44

* Different displacement possible on request.